

# 11400 TOMAHAWK CREEK PKWY LEAWOOD, KS

**AREA**  
REAL ESTATE ADVISORS



## PROPERTY HIGHLIGHTS

---

### AVAILABILITY:

2<sup>ND</sup> FLOOR - 22,831 RSF

4<sup>TH</sup> FLOOR - 3,737 RSF

TOMAHAWK CREEK TRAIL ACROSS THE STREET

WITHIN MINUTES OF UPSCALE SHOPPING CENTERS: TOWN CENTER CROSSING, TOWN CENTER PLAZA AND PARK PLACE

LOCATED IN LEAWOOD'S PREMIER OFFICE DESTINATION, TOMAHAWK CREEK PARKWAY

OWNER OCCUPIED WITH PROPERTY MANAGEMENT ON-SITE

### BUILDING AMENITIES:

- > 60-SEAT CONFERENCE CENTER WITH AV
- > DINING ROOM WITH VENDING
- > EXERCISE FACILITY WITH SHOWERS
- > OUTDOOR PATIO WITH BBQ GRILL
- > 4 EV CHARGERS
- > PICKLEBALL COURTS

## MORE INFORMATION

---

**TIM SCHAFFER**

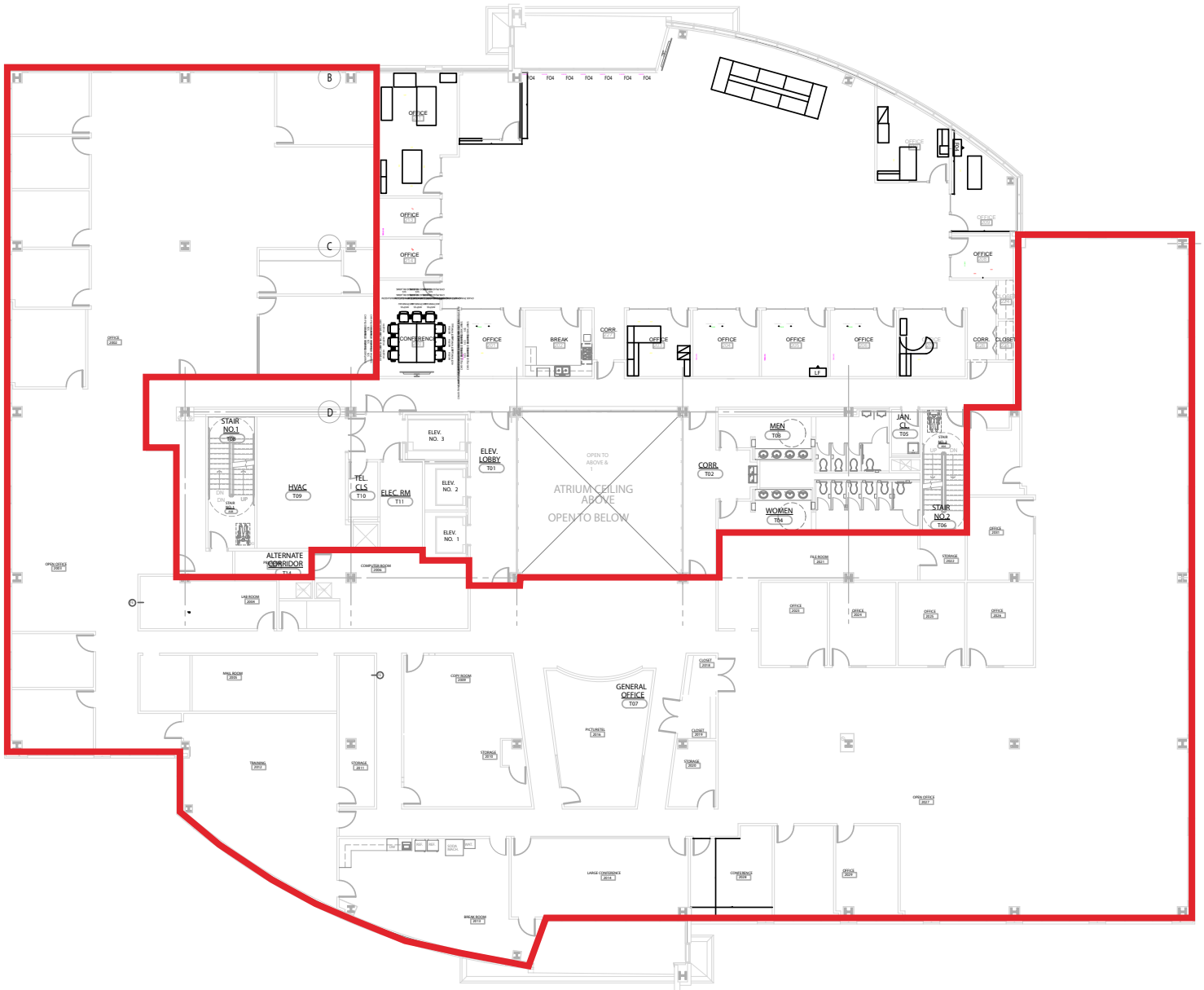
**D** 816.777.2535

**E** TSCHAFFER@OPENAREA.COM

# 2<sup>ND</sup> FLOOR PLAN

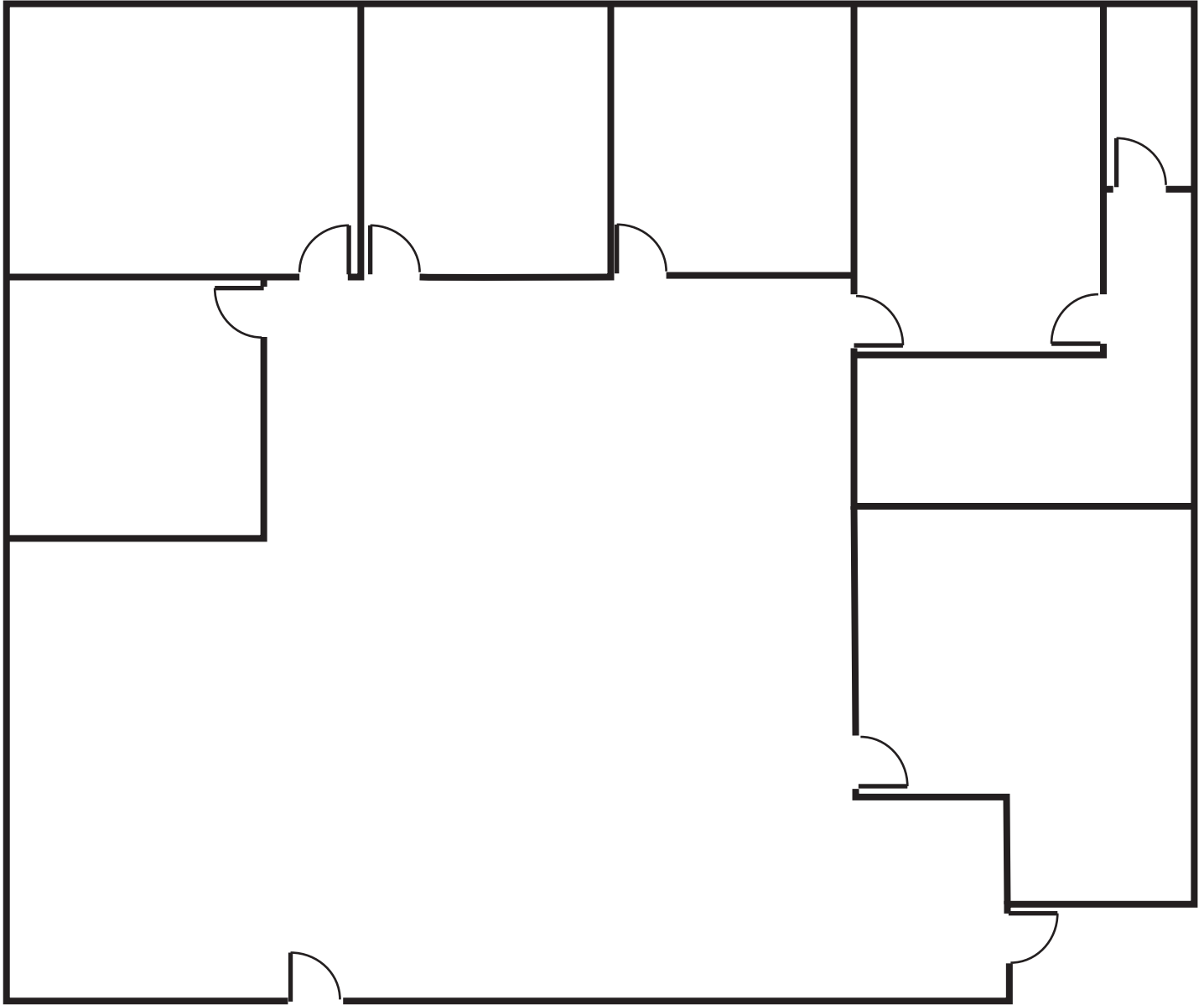
22,831 RSF

AREA<sup>TM</sup>  
REAL ESTATE ADVISORS



# 4<sup>TH</sup> FLOOR PLAN

3,737 RSF





# BUILDING AMENITIES

**AREA**  
REAL ESTATE ADVISORS



COMMON BREAK ROOM



TENANT VENDING



DINING ROOM



TRAINING ROOM

The information used to create this brochure was gathered from sources deemed reliable. Though we do not doubt its accuracy, we do not guarantee or warranty it. You and your advisors should conduct a careful independent investigation of the information to determine your satisfaction and suitability.

[OPENAREA.COM](https://openarea.com)



