



4802 MITCHELL AVENUE
ST. JOSEPH, MO



WORLD CLASS CAMPUS



SOUTH BUILDING



AVAILABILITIES

LOWER LEVEL 12,523 SF

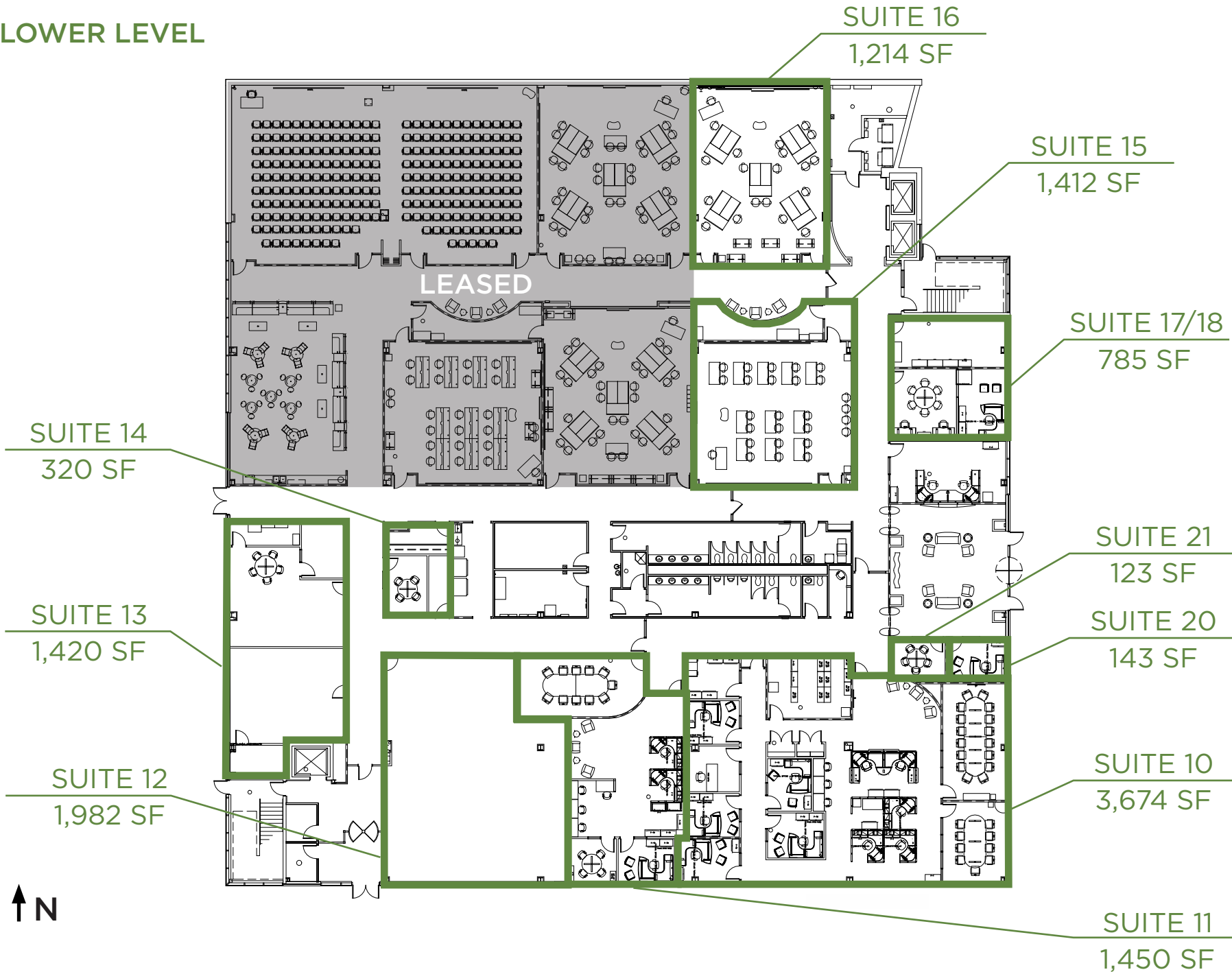
SUITE 10	3,674 SF
SUITE 11	1,450 SF
SUITE 12	1,982 SF
SUITE 13	1,420 SF
SUITE 14	320 SF
SUITE 15	1,412 SF
SUITE 16	1,214 SF
SUITE 17/18	785 SF
SUITE 20	143 SF
SUITE 21	123 SF

FLOOR 1 13,627 SF

SUITE 110	7,679 SF
SUITE 120	5,588 SF

SOUTH BUILDING

LOWER LEVEL



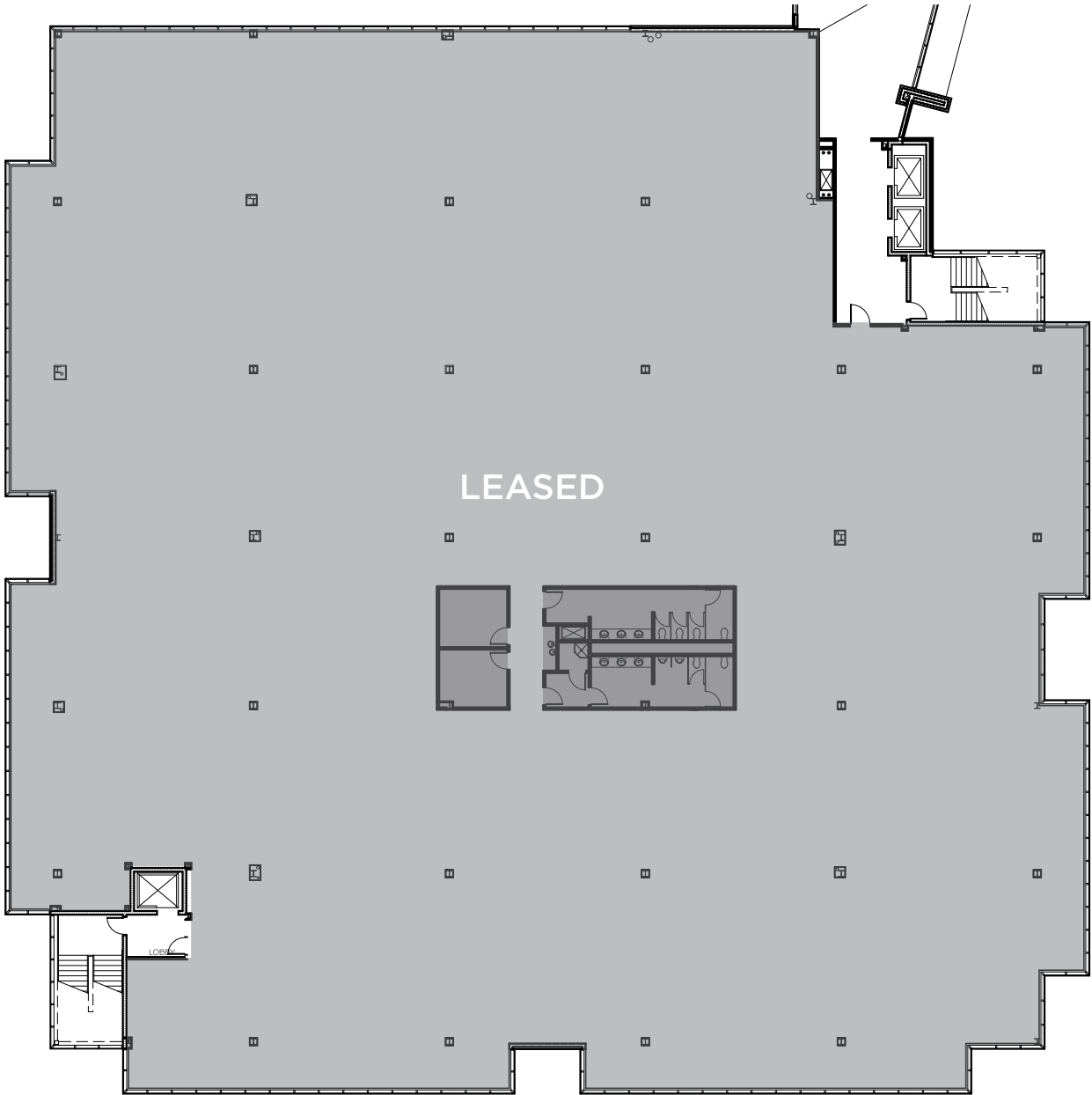
SOUTH BUILDING

FLOOR 1



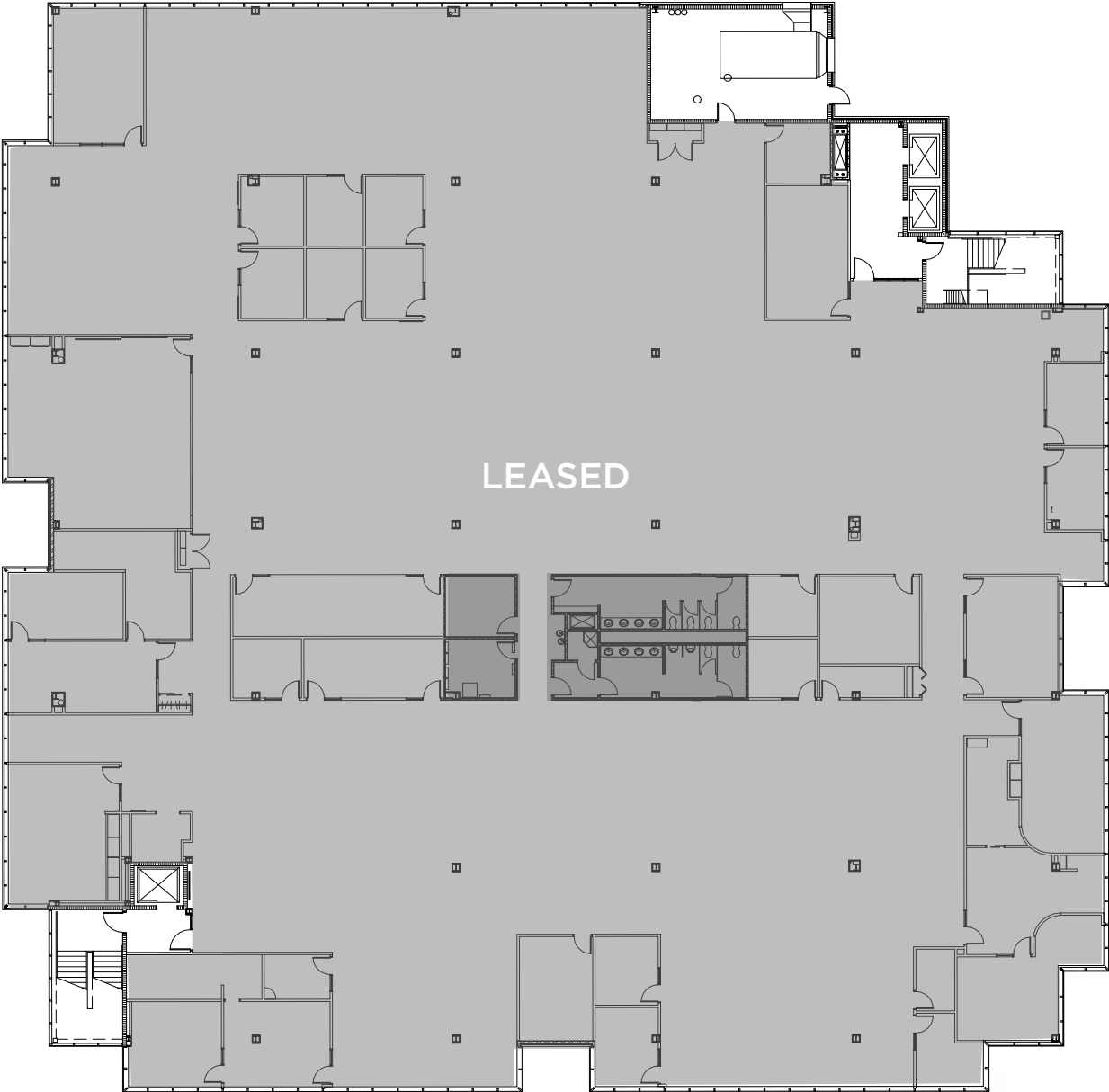
SOUTH BUILDING

FLOOR 2



SOUTH BUILDING

FLOOR 3



EAST/WEST BUILDING

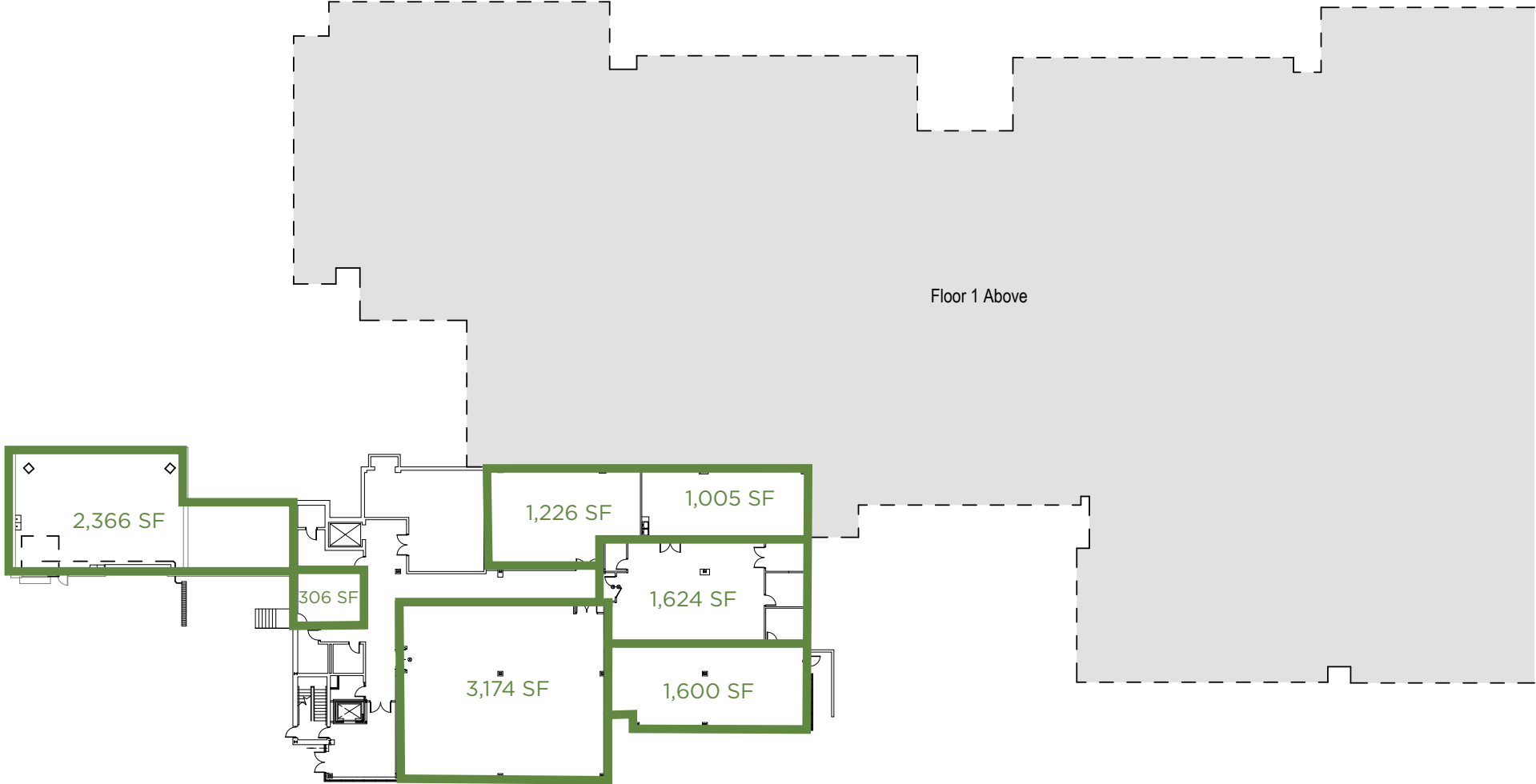


AVAILABILITIES

TOTAL AVAILABLE	225,000 SF
LOWER LEVEL	306-11,301 SF
FLOOR 1	62,170 SF
FLOOR 2	29,621-57,654 SF
FLOOR 3	30,407-61,287 SF

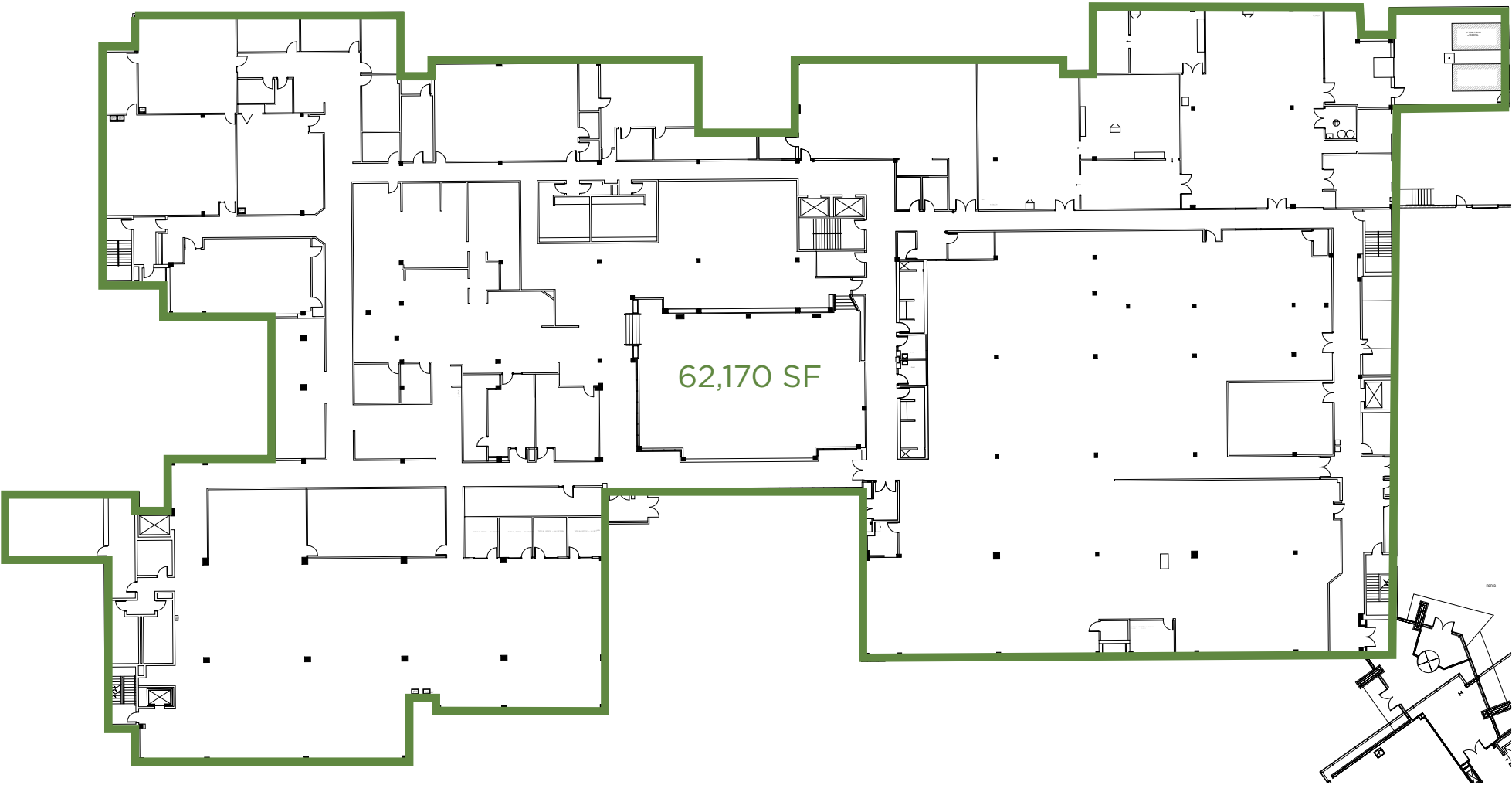
EAST/WEST BUILDING

LOWER LEVEL



EAST/WEST BUILDING

FLOOR 1



EAST/WEST BUILDING

FLOOR 2



WEST BUILDING

EAST BUILDING



EAST/WEST BUILDING

FLOOR 3

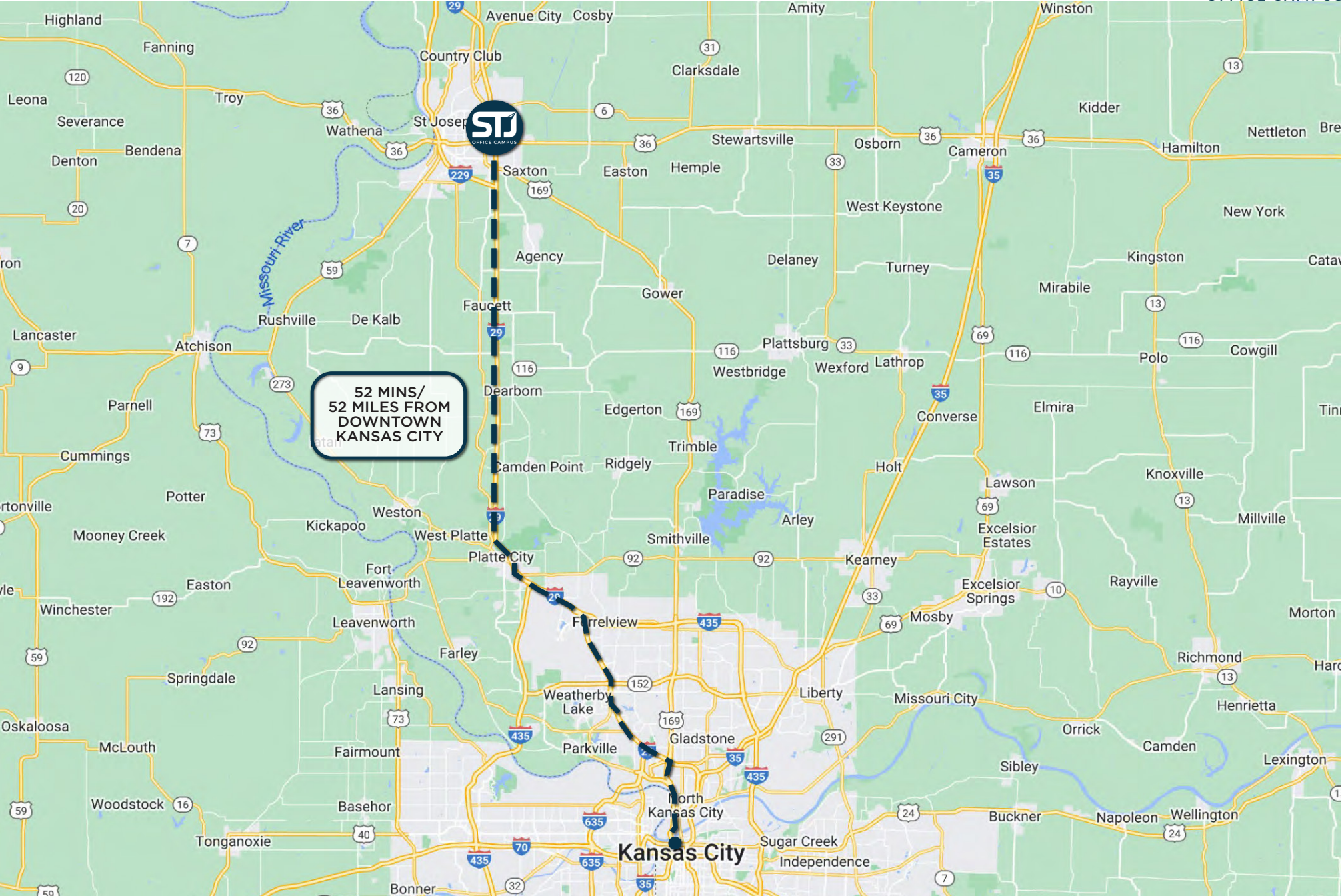


WEST BUILDING

EAST BUILDING

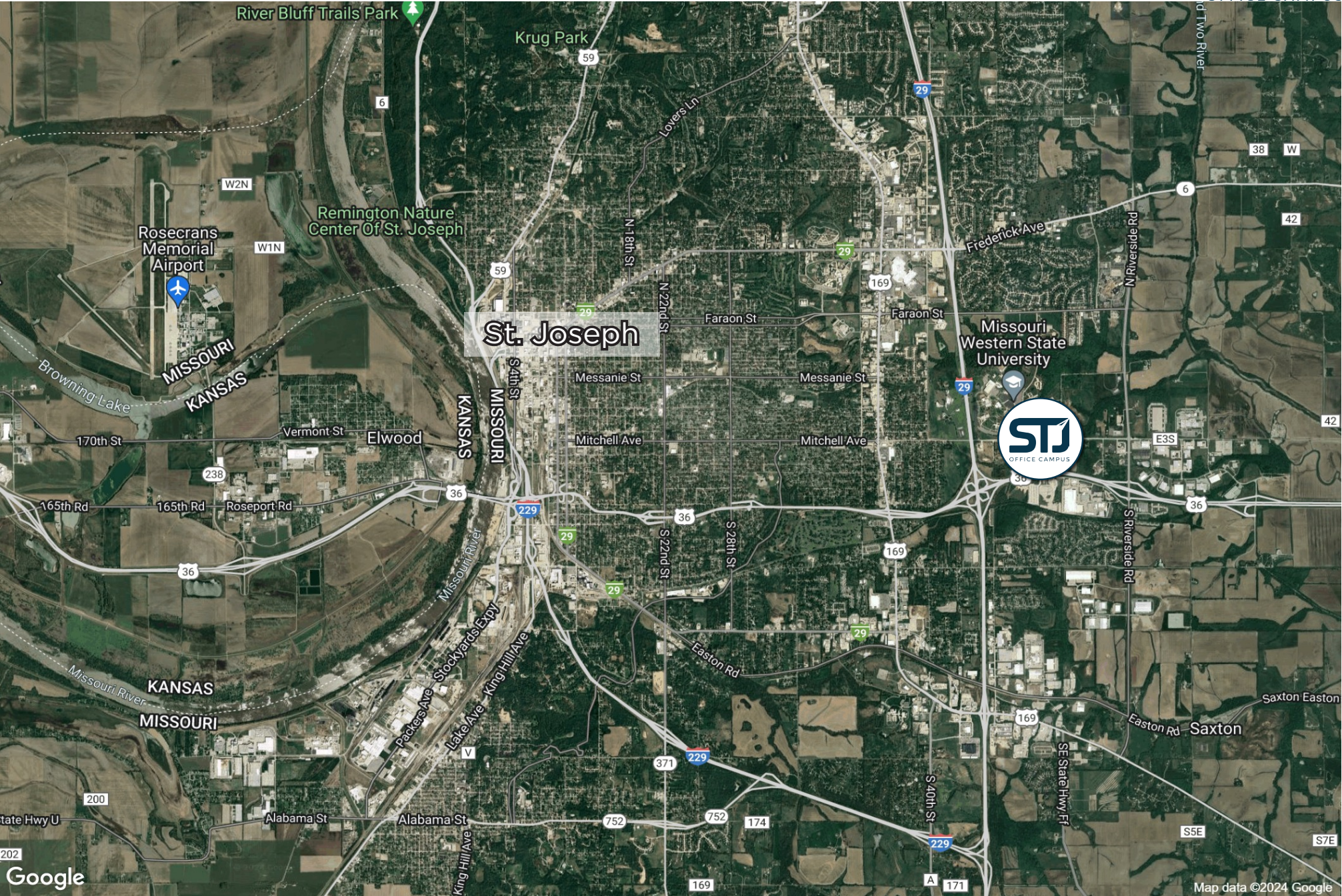


DRIVE TIME FROM KC



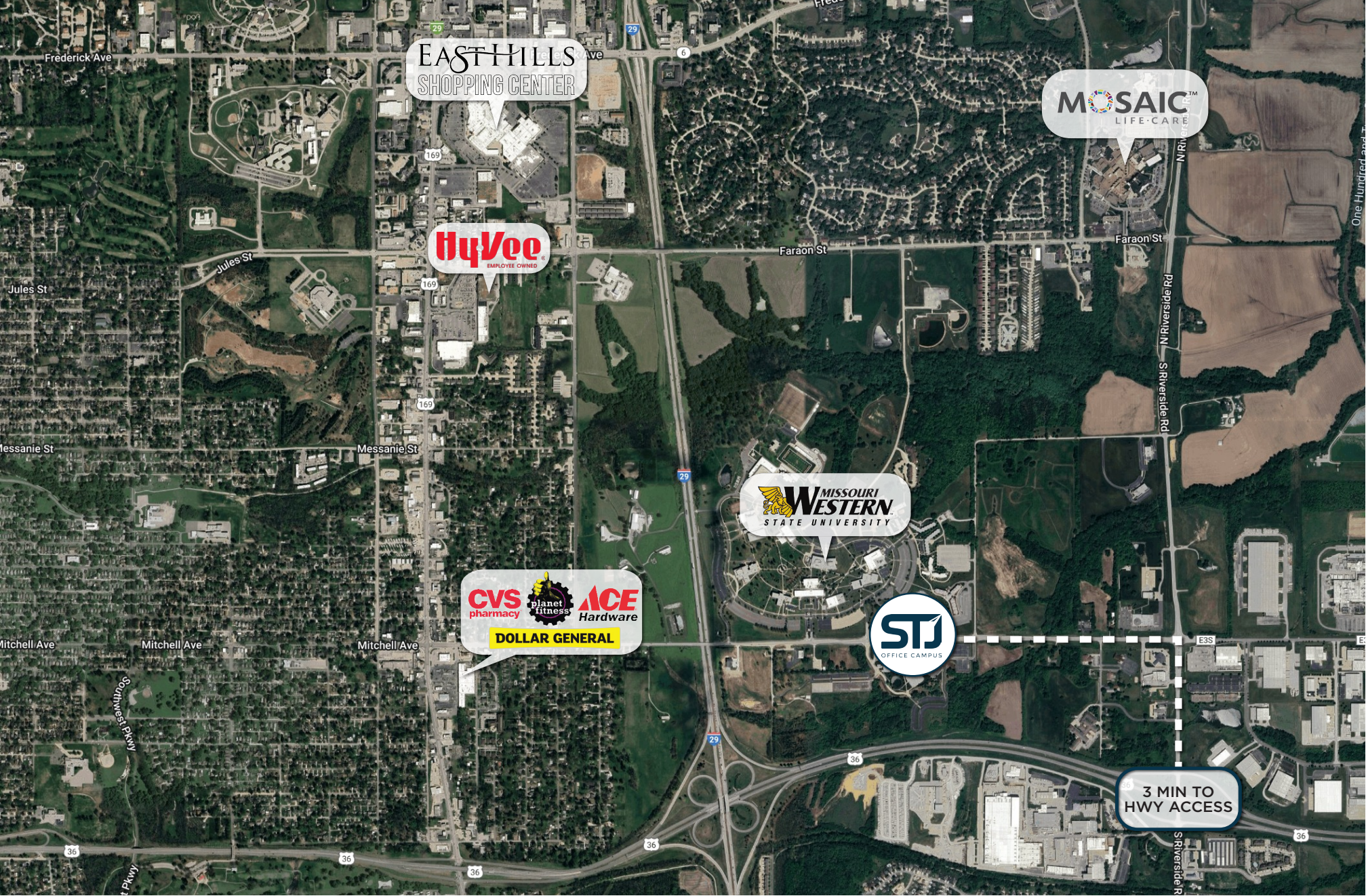
The information used to create this brochure was gathered from sources deemed reliable. Though we do not doubt its accuracy, we do not guarantee or warranty it. You and your advisors should conduct a careful independent investigation of the information to determine your satisfaction and suitability.

ST. JOSEPH MAP



The information used to create this brochure was gathered from sources deemed reliable. Though we do not doubt its accuracy, we do not guarantee or warranty it. You and your advisors should conduct a careful independent investigation of the information to determine your satisfaction and suitability.

AREA MAP



The information used to create this brochure was gathered from sources deemed reliable. Though we do not doubt its accuracy, we do not guarantee or warranty it. You and your advisors should conduct a careful independent investigation of the information to determine your satisfaction and suitability.

CONTACT

LEASING



JAY HAWKINS
D 816.895.4808
E JHAWKINS@OPENAREA.COM

TIM SCHAFFER
D 816.777.2535
E TSCHAFFER@OPENAREA.COM



ADAM STEIN
D 816.248.6821
E ASTEIN@BHHSSTEIN.COM

LONNIE BASS
D 816.752.8235
E LBASS@BHHSSTEIN.COM

SARAH WEAVER
D 816.394.0256
E SWEAVER@BHHSSTEIN.COM

LEASING/MANAGEMENT



CHRISTIAN HUFFMAN
D 913.980.9891
E CHUFFMAN@SKYRE.COM

KENNY ANDERSON
D 612.269.5787
E KANDERSON@SKYRE.COM

WES GRAMMER
D 913.526.6222
E WGRAMMER@SKYRE.COM